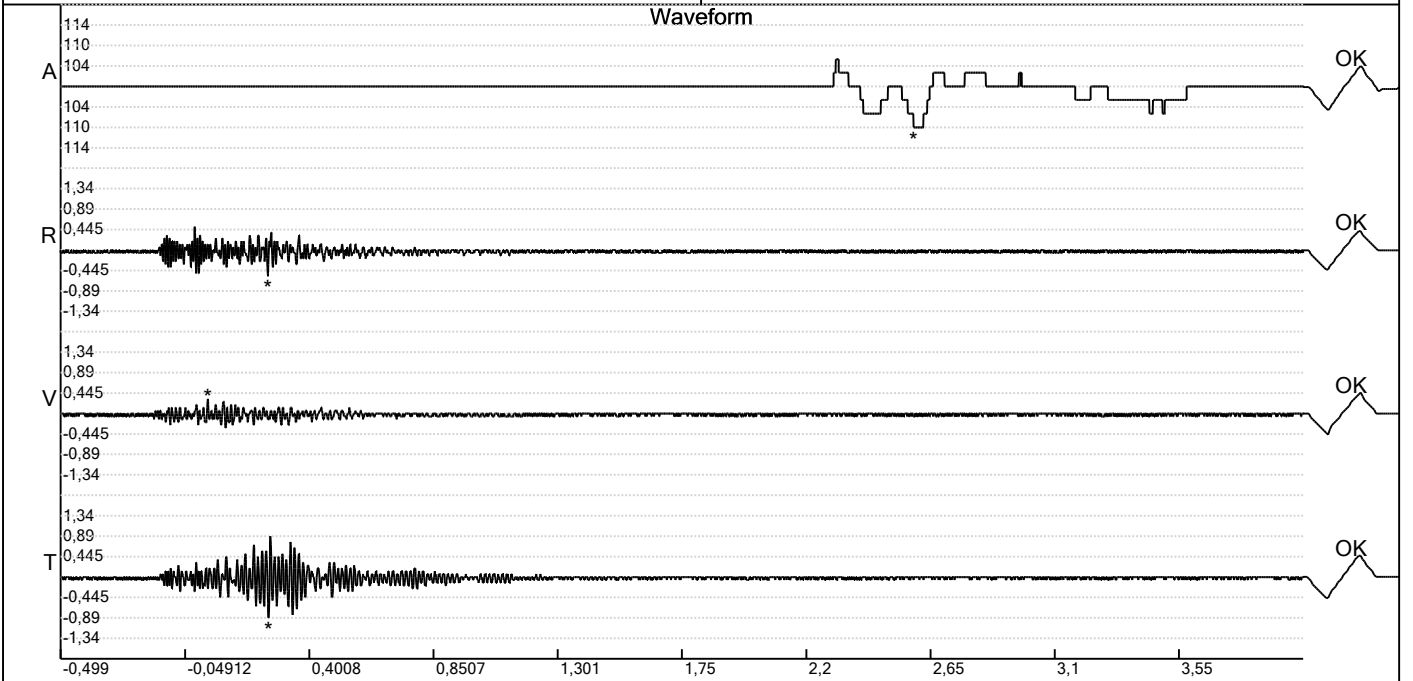


Carrière de BRS  
 Comblain -6  
 Tir du 13/09/2023  
 Sismographe placé au  
 261 Halleux  
 4710 Comblain-au-Pont

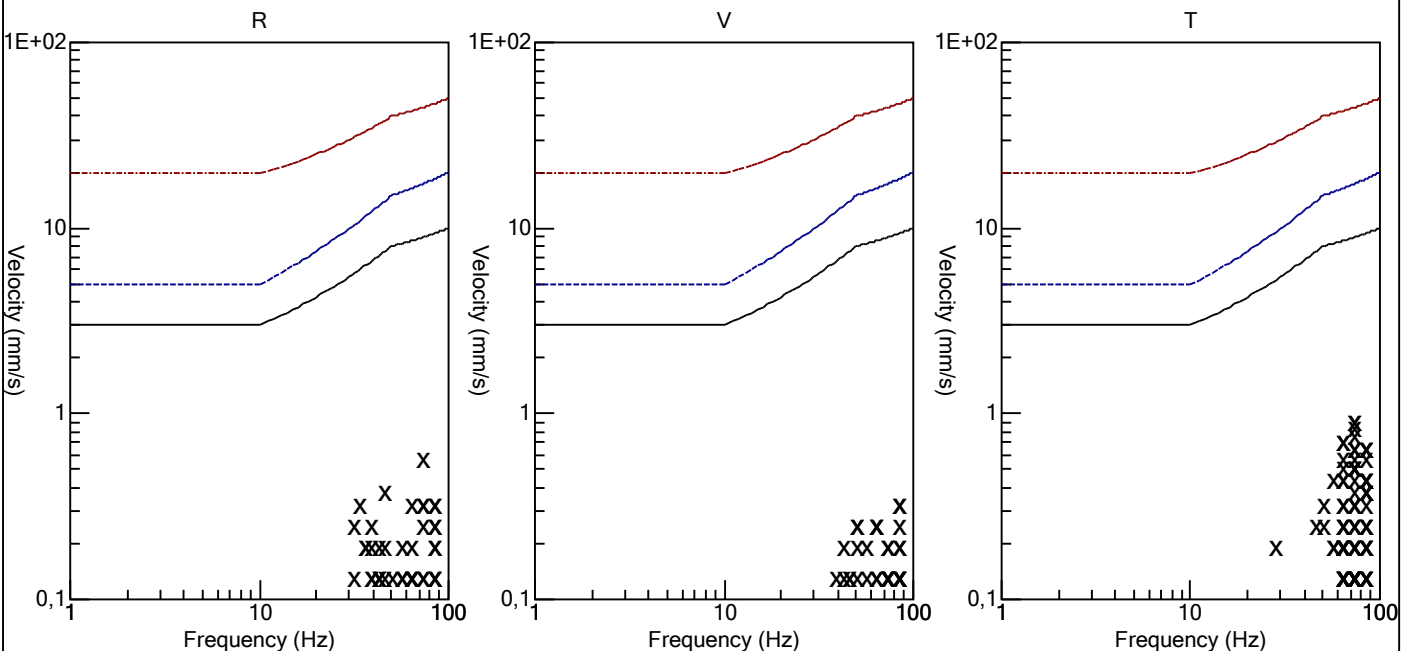
Record: 1789202309131401045.dtb  
 Number: 045  
 Seismograph: Mini-Seis 1789  
 Type of Record: Waveform  
 Date: 13-09-23 14:01:00  
 Duration: 4,50 Seconds  
 Sample Rate: 1024  
 Pre-Trigger: 0,5 Seconds  
 Seismic Trigger: 0,51 mm/s  
 Acoustic Trigger: 142,1 dB  
 Seismic Gain: 63,5  
 Acoustic Gain: 141,9 dB  
 Voltage: 6,4

**Peaks and Frequencies**  
 PPV Maximum (Geo #1): 0,89 mm/s  
 Acoustic #1: 109,5 dB @ 6,3 Hz (2,589844 s)  
 Radial #1: 0,57 mm/s @ 73,1 Hz (0,2519531 s)  
 Vertical #1: 0,32 mm/s @ 85,3 Hz (0,03417969 s)  
 Transverse #1: 0,89 mm/s @ 73,1 Hz (0,2539063 s)  
 Last Calibration Date: 03-12-21

**Graph Information**  
 Time Range: -0,499 s to 4 s, Intervals: 0,4499 Seconds



Velocity vs. Frequency (DIN 4150-3 Tab 1)



Carrière de BRS  
 Comblain -6  
 Tir du 13/09/2023  
 Sismographe placé au  
 261 Halleux  
 4710 Comblain-au-Pont

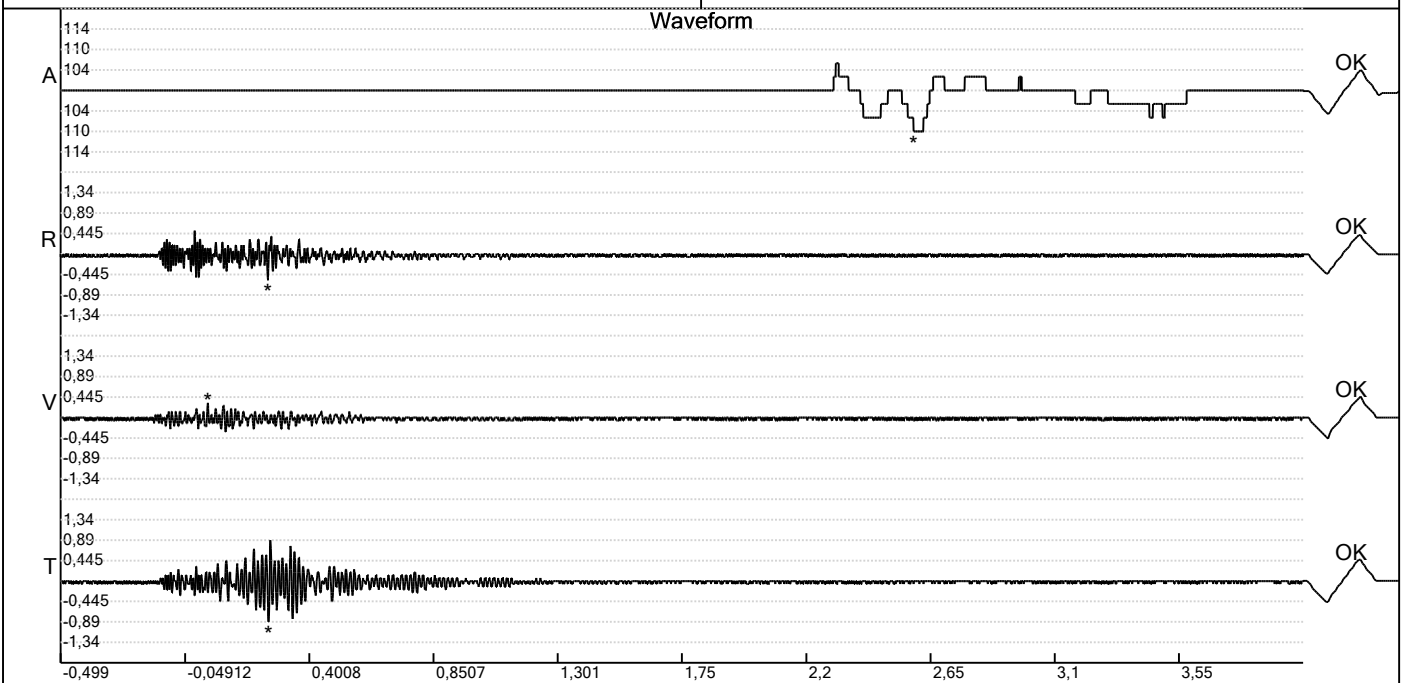
Record: 1789202309131401045.dtb  
 Number: 045  
 Seismograph: Mini-Seis 1789  
 Type of Record: Waveform  
 Date: 13-09-23 14:01:00  
 Duration: 4,50 Seconds  
 Sample Rate: 1024  
 Pre-Trigger: 0,5 Seconds  
 Seismic Trigger: 0,51 mm/s  
 Acoustic Trigger: 142,1 dB  
 Seismic Gain: 63,5  
 Acoustic Gain: 141,9 dB  
 Voltage: 6,4

Peaks and Frequencies

PPV Maximum (Geo #1): 0,89 mm/s  
 Acoustic #1: 109,5 dB @ 6,3 Hz (2,589844 s)  
 Radial #1: 0,57 mm/s @ 73,1 Hz (0,2519531 s)  
 Vertical #1: 0,32 mm/s @ 85,3 Hz (0,03417969 s)  
 Transverse #1: 0,89 mm/s @ 73,1 Hz (0,2539063 s)  
 Last Calibration Date: 03-12-21

Graph Information

Time Range: -0,499 s to 4 s, Intervals: 0,4499 Seconds



Fast Fourier Transform (Amplitude Spectrum)

